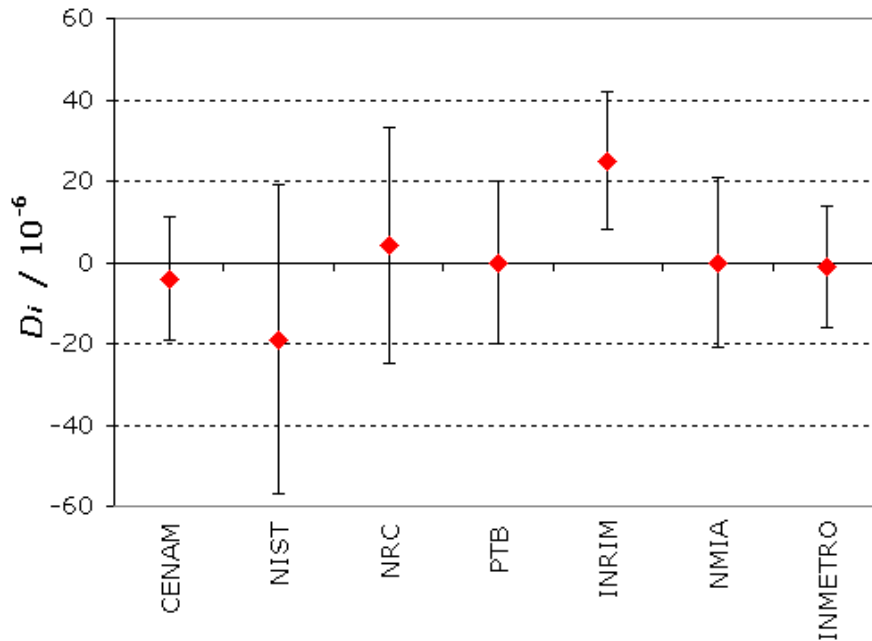


MEASURAND: Volume

NOMINAL VALUE: 20 L

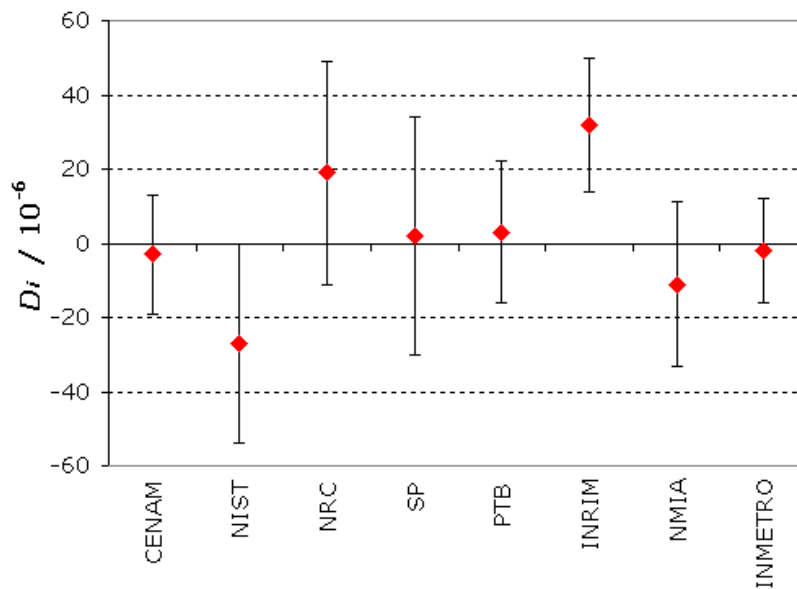
TRANSFER STANDARD: TS 710-04

Degrees of equivalence  $D_i$  and expanded uncertainty  $U_i$  at approximately a 95% level of confidenceSP is excluded from the analysis (see Appendix C of the [Final report](#))

MEASURAND: Volume

NOMINAL VALUE: 20 L

TRANSFER STANDARD: TS 710-05

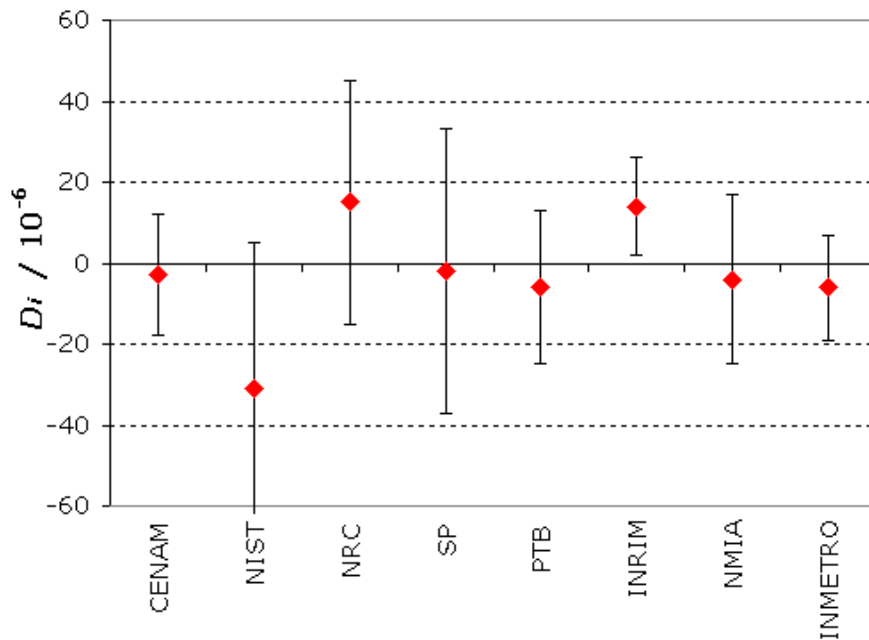
Degrees of equivalence  $D_i$  and expanded uncertainty  $U_i$  at approximately a 95% level of confidence

MEASURAND: Volume

NOMINAL VALUE: 20 L

TRANSFER STANDARD: TS 710-06

Degrees of equivalence  $D_i$  and expanded uncertainty  $U_i$  at approximately a 95% level of confidence



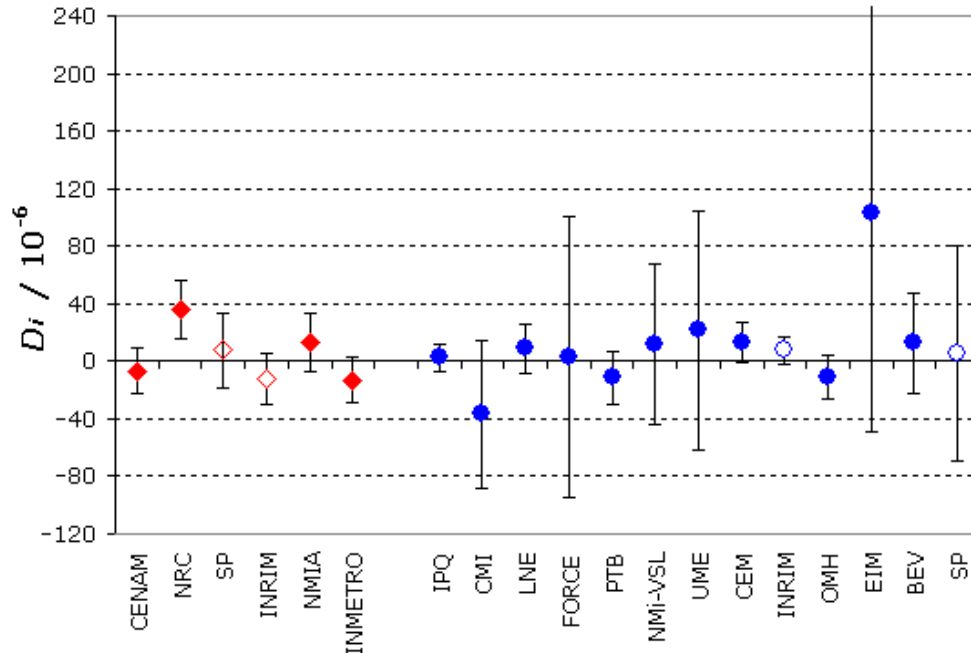
CCM.FF-K4 and EUROMET.M.FF-K4

MEASURAND: Volume

NOMINAL VALUE: 100 mL

CCM.FF-K4 TRANSFER STANDARD: TS 03.04.03

Degrees of equivalence  $D_i$  and expanded uncertainty  $U_i$  at approximately a 95% level of confidence



Red diamonds : participants in CCM.FF-K4

Blue circles : participants in EUROMET.FF-K4

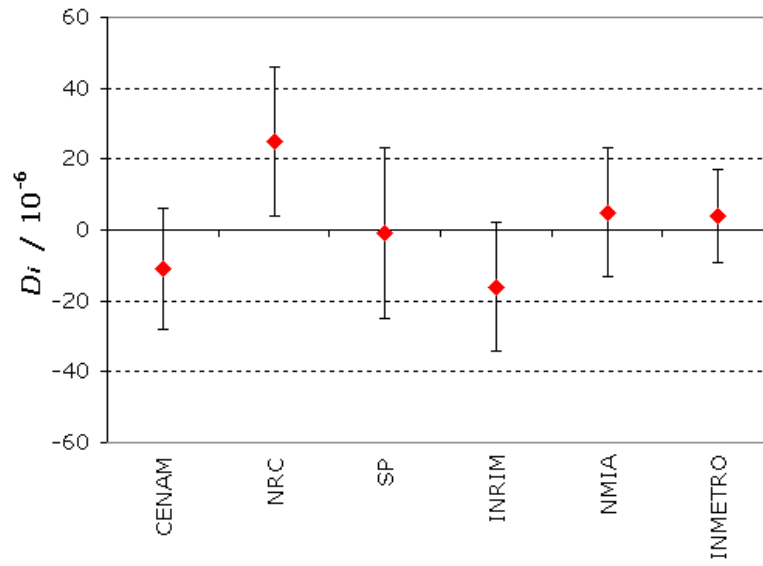
Open symbols : common participants

MEASURAND: Volume

NOMINAL VALUE: 100 mL

TRANSFER STANDARD: TS 03.01.13

Degrees of equivalence  $D_i$  and expanded uncertainty  $U_i$  at approximately a 95% level of confidence

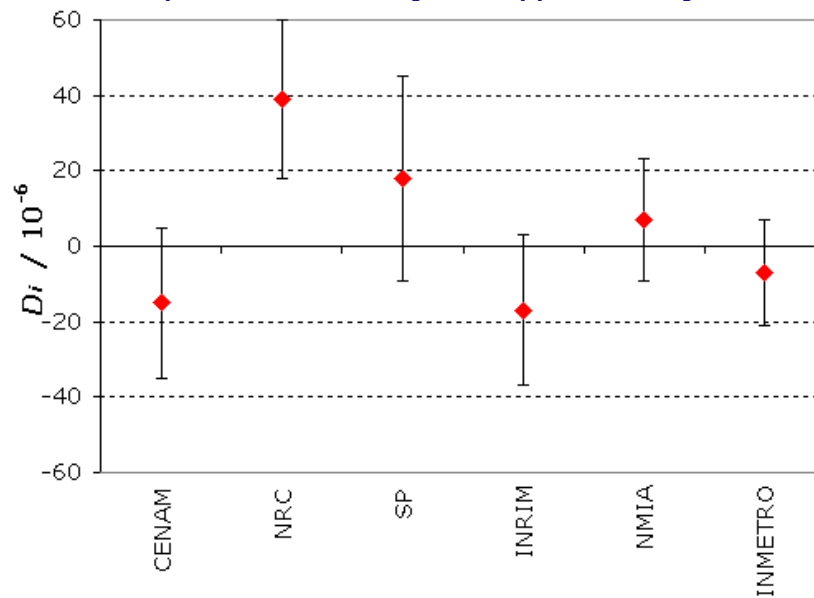


MEASURAND: Volume

NOMINAL VALUE: 100 mL

TRANSFER STANDARD: TS 03.01.14

Degrees of equivalence  $D_i$  and expanded uncertainty  $U_i$  at approximately a 95% level of confidence

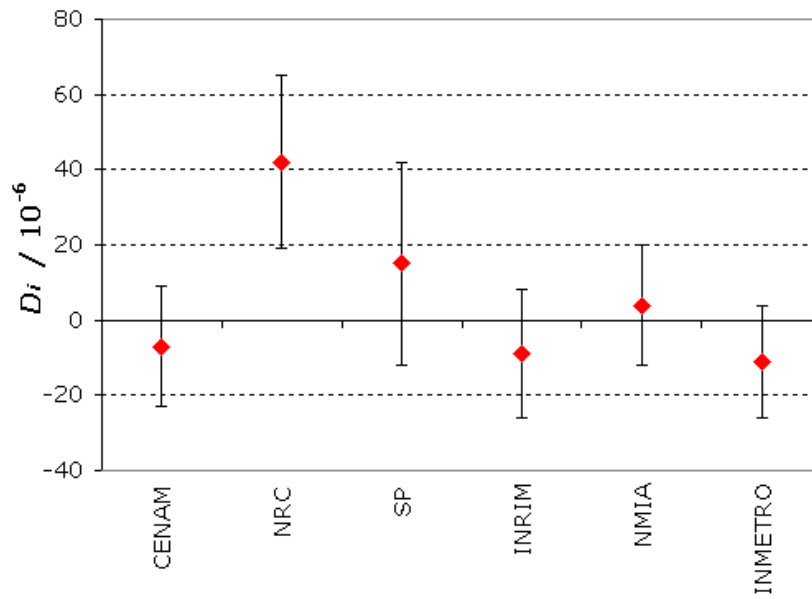


MEASURAND: Volume

NOMINAL VALUE: 100 mL

TRANSFER STANDARD: TS 03.01.15

Degrees of equivalence  $D_i$  and expanded uncertainty  $U_i$  at approximately a 95% level of confidence



MEASURAND: Volume

NOMINAL VALUE: 100 mL

TRANSFER STANDARD: TS 03.01.17

Degrees of equivalence  $D_i$  and expanded uncertainty  $U_i$  at approximately a 95% level of confidence

